

DAVID O'HARA

ISABELLE ALLEN

IN EXTREMIS



IT'S THE END OF THEIR WORLD

GSP STUDIOS PRESENTS A STEVE STONE FILM "IN EXTREMIS" DAVID O'HARA ISABELLE ALLEN LISA GORVLEY AND NEIL PEARSON COSTUME DESIGNER LANCE MILLIGAN MAKE UP SUPERVISOR STEPHANIE BENTHAM
PRODUCED BY CELINA HARRIS EXECUTIVE PRODUCERS JUSTIN KOUTSELINIS EDITED BY LIZ WEBBER DIRECTOR OF PHOTOGRAPHY ALEX VEITCH EXECUTIVE PRODUCERS JACK TAYLOR PRODUCED BY LIONEL HICKS AND ALAN LATHAM WRITTEN AND DIRECTED BY STEVE STONE



DISCLAIMER:

Red Rock Entertainment Ltd is not authorised and regulated by the Financial Conduct Authority (FCA). The content of this promotion is not authorised under the Financial Services and Markets Act 2000 (FSMA). Reliance on the promotion for the purpose of engaging in any investment activity may expose an individual to a significant risk of losing all of the investment. UK residents wishing to participate in this promotion must fall into the category of sophisticated investor or high net worth individual as outlined by the Financial Conduct Authority (FCA).



CONTENTS

5	Synopsis
7	Director Vision
8-11	Cast
12	Writer Director
13-15	Producers Executive Producers
16	Marketing
17	Production Company
18	Visual Effects
19	Enterprise Investment Scheme





EXTREMIS

SYNOPSIS

Alex, a successful executive, returns home to his wife and daughter and their beautiful country home. But something is wrong within this house. An unspoken discord that whispers of a terrible tragedy that happened here. Then our focus shifts from the unspoken pain of this family to a great cataclysm that is unfolding “out there” in the surrounding landscape.

Dark clouds gather and the world beyond their garden begins to die. What event is this- an ecological disaster, a terror attack, an invasion? Within hours the house stands utterly isolated in a now deadened toxic landscape.

Dark shapes writhe and twist in the inky sky above the house. A dark and threatening figure emerges in the shadows of the garden.

His daughter, Anna, becomes ill. Some part of Alex senses that this has all happened before. The figure invades the house, pursuing the family. Alex's wife, Claudia, deserts them. Alex escapes from the house with his now dying daughter - desperate to find any help that might be still be out there. Alex races across the apocalyptic landscape, and the chase culminates in an abandoned hospital.

This tortuous dreamscape is the product of Alex's inner psyche. He is reliving the agony of having already lost his daughter. Anna died from cancer three months before the film begins.

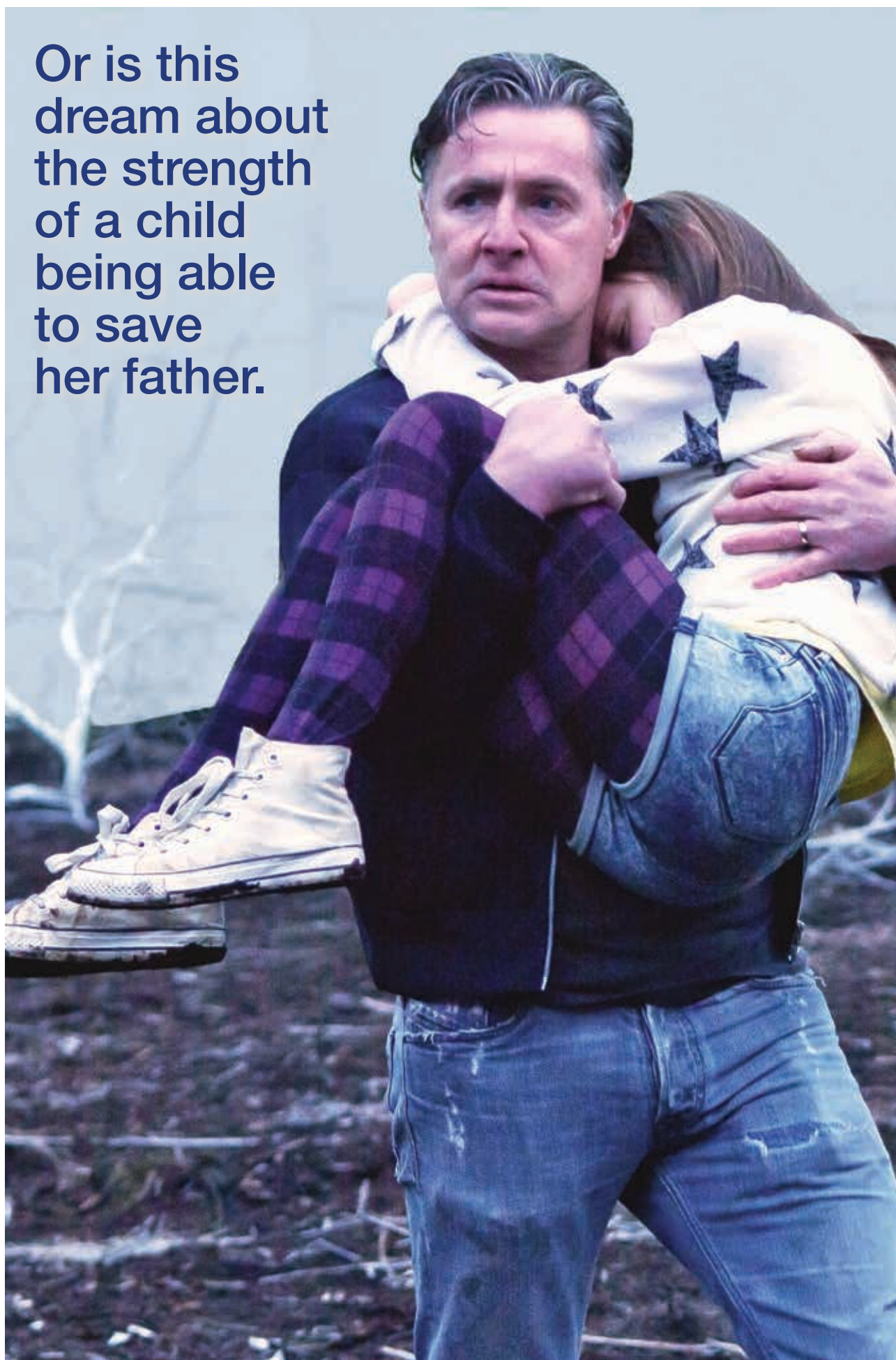
But does this nightmare provide a chance of changing the past?



**Can a
father
save his
daughter
this time?**

**Is there
a second
chance?**

Or is this
dream about
the strength
of a child
being able
to save
her father.



Directors Vision

Through the journey of our story, we come to realise that the 'event' in our film has not happened 'out there'. This is an apocalypse that has taken place 'within'.

Extremis is a story to remind us of all that we should hold most precious. We are here for but a short time. All that we are, all that we love, hangs by the slenderest thread.

With Extremis, I want to make a film that beguiles. At the start, it should defy genre, what appears to be an 'end of the world' film then becomes a journey into a nightmare, plunging us into our deepest fears of love and loss.

Steve Stone



Cast

David O'Hara

David O'Hara was born in Glasgow, Scotland. He secured his first acting role at the age of 18 in Bill Forsyth's, *Comfort and Joy*. He continued to focus on theatre and toured Europe with the New Shakespeare Company as Tybalt in *Romeo and Juliet* directed by Declan Donnellan. He also spent a year at the Royal Shakespeare Company, performing in Jonathan Miller's production of *Taming of the Shrew*, *Romeo and Juliet*, *Cymbeline* and *Bite of the Night* directed by Danny Boyle.



O'Hara's big break came as Stephen the rampaging Irishman who joined forces with William Wallace (Mel Gibson) in *Braveheart* (1995). The following year saw him co-starring opposite Helen Mirren as a slightly independent policeman in Granada Television's *Prime Suspect 5: Errors in Judgement*.

In 1997, O'Hara appeared in Alan J Pakula's, *The Devil's Own* and portrayed Bill Sykes in the Disney adaptation of *Oliver Twist*.

His recent work includes *The Departed*, *Harry Potter and the Deathly Hallows: Part 1* (2010); *Cowboys & Aliens* (2011), *The Groundsman* (2013); and TV series *Luther* (2013).



Cast

Isabelle Allen



Isabelle Allen is an English child actress known for her role as the young Cosette in the 2012 film adaptation of *Les Misérables*.

The role has earned her critical acclaim, with her sharing various film cast awards such



as the National Board of Review Award for Best Cast and the Satellite Award for Best Cast – Motion Picture. Allen is now working on several projects in development and has been heralded for big things over the next few years.



Cast



Lisa Gormley

Lisa Gormley is best known for her role as 'Bianca Scott' in the long running Australian serial drama, Home & Away. Previous to this Lisa studied at Sydney's National Institute of Dramatic Art (NIDA) providing her with the skills and knowledge to work proficiently across theatre, film and television.

Most recently Lisa returned to the stage at Sydney's Ensemble Theatre in the role of "Brooke" in Jon Robin Baitz's Other Desert Cities.



Neil Pearson

Neil is a British Actor. His big break came in 1990 as "Dave", in the award winning sitcom Drop the Dead Donkey. Pearson's film work includes Fever Pitch (1997) and Bridget Jones's Diary (2001). His most recent work includes appearances in television series Midsomer Murders and Death in Paradise. In 2014 Pearson became a series regular in the BBC drama, Waterloo Road as new head teacher Vaughan Fitzgerald.



Toyah Willcox

Toyah Ann Willcox is an English singer and actress. In a career spanning more than thirty years, Willcox has had eight Top 40 singles, released over 20 albums, written two books, appeared in over 40 stage plays and ten feature films, and voiced and presented numerous television shows including Casualty, Teletubbies and Adam's Family Tree. Her most recent work includes Secret Diary of a Call Girl.



Nick Cornwall

Nick Cornwall has been involved in theatre and film for 30 years. He has experience as a stage manager, set and costume designer and actor. Cornwall has secured roles in a number of short films including Assassin 2013, Blood Loyal (2013) and Dragons of Camelot (2013). His most recent work includes international TV shows such as Da Vinci's Demons and Outlander. He appeared as Mr Wallace in Artificio Conceal (Cannes 2015).

Cast



Bill Fellows

Bill Fellows is best known for his role as a semi-regular character in the award-winning *Wolfblood*, the hugely popular drama *Broadchurch* with Olivia Colman and in the multi award-winning *Downton Abbey*.

His film credits include *The Tournament* with Robert Carlyle, *In Our Name* with Joanne Froggatt and *United*, the story of the Munich air disaster, with Jack O'Connell and David Tennant.



Stuart Sessions

Stuart Sessions completed a diploma in acting at Birkbeck College in 2005. He has starred in a number of short films including *Job Interview with a Vampire* (2010); *The Long Absence* (2011); and *The Boy Who Never Went Ice Skating* (2012). His theatre work includes the role of Duke Vincentio in *Measure for Measure* (Rose Bankside) and Jaques Rene Hebert in *Trial of Marie Antoinette* (Courtyard Theatre). He also recently finished as understudy to the lead in the long-running West End hit, *Woman in Black*.



Steve Stone



In 1987, Steve became Art Director for Tense Productions in Sheffield – a company specialising in large-scale dance events born out of the Rave movement of the late 80's and early 90's. During this time, Steve oversaw the visual design of various media into these events including intelligent lighting, video and film systems.

By 1993, Tense was organising events for up to 15,000 people per night. Steve also directed short films including *The Board Room*, *The Pearl* and *Lost Souls*.

In late 1997, Stone returned to his passion for image making when he set up a production company, Nexus DNA. Until 2010 Steve worked largely as a digital artist with a client list that included Sony, General Electric, Nike and most major publishing houses in London and New York.

In late 2009, Nexus DNA moved to new premises on an old abandoned industrial site. This site inspired the script for Stone's debut feature, *Entity*. The film starred Dervla Kirwan and Charlotte Riley. *Entity* was released in 2013, distributed by Metrodome Entertainment in the UK, and represented by Arclight Films in all other territories worldwide. *Entity* recently won the Best Film award at the London Independent Film Festival (LIFF) and the British Horror Film Festival.

Steve now runs two companies, Nexus DNA Films Ltd and Nexus DNA Artworx Ltd.



Producers

Alan Latham



Alan Latham qualified as a chartered accountant and joined the film industry in 1989 as Financial Director of Cori Film Distributors. After negotiating the acquisition of Ealing Studios from the BBC as Commercial Director of BBRK Group Ltd, he produced his first feature film, *The Brylcreem Boys* in 1996.

As a director of Downtown Pictures, Alan was also involved in the UK theatrical releases of the Oscar-winning, *Gods and Monsters* and Steven Spielberg's *Last Days* as well as Spike Lee's *Summer of Sam*, and the award-winning films, *Left Luggage* and Peter Mullan's *Orphans*.

Over the past 15 years, Alan has produced, co-produced and executive-produced over 25 films including *I Could Never be Your Woman* (Michelle Pfeiffer, Paul Rudd) directed by Amy Heckerling; *The Christmas Miracle of Jonathan Toomey* (Joely Richardson, Tom Berenger); and *Dead Man Running* (Danny Dyer, Tamer Hassan, Brenda Blethyn and Curtis Jackson (50 Cent).

In 2010 Alan co-produced *Flutter*, (Jo Anderson, Luke Evans, Billy Zane and Mark Williams); *If I Were You* (Marcia Gay Harden, Leonor Watling and Aidan Quinn) a UK / Canadian co-production shot in Toronto, written and directed by Joan Carr Wiggin, and *The Knife That Killed Me*, Green Screen Productions' first CGI feature film, directed by Kit Monkman and Marcus Romer.

Alan is Managing Director of Green Screen Productions, which he created in 2008, running its own studios south of York, and working with the University of York's Heslington Studios to provide full visual effects and postproduction film and sound services.



Producers

Lionel Hicks

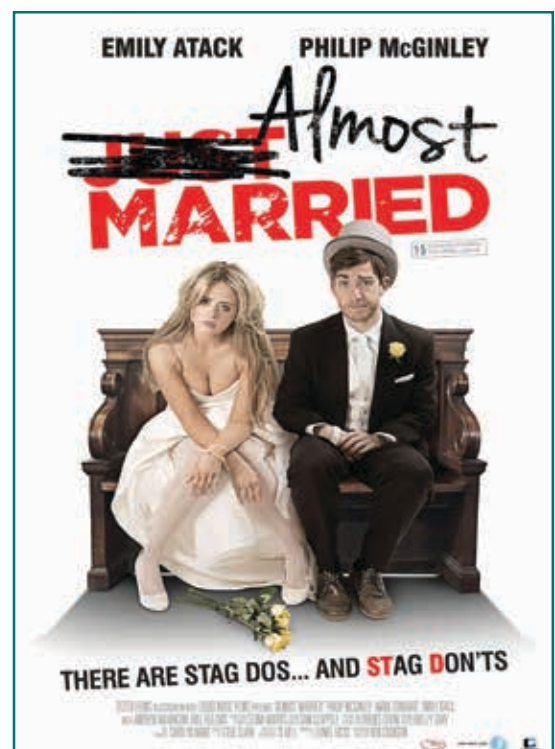


Prior to his work in film Lionel was renowned as a Rock drummer and toured the world with many bands, he also became a respected Music Producer. Over two decades Lionel produced over 17 internationally released albums, of which five have become best-selling records in territories such as the UK, USA, Germany and Japan.

Lionel was responsible for setting up several recording studios in the early 90's, one of them he still owns to date 'Winterland Studios' in Minneapolis USA working with artists such as The Black Eyed Peas, Lenny Kravitz, Alanis Morissette, Elvis Costello, Jessica Simpson, R Kelly, James Blunt and Keane.

Having made the transition to film Lionel has produced fourteen feature films, notable credits including the Vampire Horror Temptation (Winner of Best British Horror 2010 by Gorezone Magazine); feature-length documentaries London Tango; The Beat Goes On and thriller Four which had a theatrical release in 2011.

Most recently as lead producer Lionel completed production on the sci-fi thriller 'Scintilla' and the feature comedy/drama 'Almost Married'. Lionel is CEO of Liquid Noise Films and company director of Moviebox Ltd.



Executive Producers

Goldfinch Pictures



Nyman Libson Paul is opening up film investment to a fresh wave of investors with a new range of tax-efficient investment vehicles under the banner of Goldfinch Pictures.

NLP has specialised in managing the financial affairs of the British film and television industry for 80 years, providing tax, financial and commercial advice for some of the biggest names (and projects) in the business.

The fact that NLP has been the accountant for every single Bond film since 1962's Dr. No illustrates the depth of their industry knowledge and connections, and we continue to attract award-winning clients.

The Goldfinch Pictures range of investment vehicles take advantage of the extremely generous tax reliefs government is offering to encourage investments in UK businesses under the Enterprise Investment Scheme programme.

The EIS and SEIS tax reliefs available are certainly compelling, but Goldfinch Pictures is a venture focused on backing commercially-viable projects and securing the best possible returns for investors.

Goldfinch is backed by an incredible range of film finance and production expertise which will allow us to take a sophisticated approach to the film EIS investment.

Not only will our team handpick the highest-quality opportunities for investors, they will also provide invaluable support in making these opportunities creative and financial successes.

Commerciality is the watchword of Goldfinch Pictures, and we take a highly-diversified approach to investment which encompasses a variety of genres and audiences.

NLP is also driving a movement to put the interests of equity investors

in film first: all Goldfinch Pictures vehicles are structured to ensure that our investors are first on the recoupment schedule and our focus on providing gap funding means investors have the security of backing projects which are almost at fruition.

While our investors will naturally be seeking tax-advantaged returns, they will also have the chance to become completely involved in the UK's vibrant entertainment industry – from premier screening to shadowing directors and even appearing on film. The opportunities are endless.

Nyman Libson Paul has specialised in managing the financial affairs of the British film and television industry for 80 years, providing tax, financial and commercial advice for some of the biggest names (and projects) in the business.

Executive Producers



Red Rock Entertainment

Red Rock Entertainment is a film finance company, based at the world famous Elstree Studios in Borehamwood, home to some of the biggest TV shows on British television and the studio of choice for many successful British films.

Working in conjunction with a number of UK production companies to raise equity for film, TV programmes and film distribution, Red Rock Entertainment offer a range of tax efficient investment opportunities.



Red Rock Entertainment primarily work on projects that are at an advanced stage and are looking for the final amount of financing. Their sole focus is on film and TV projects that have a commercial appeal, an identifiable audience, moderately low and controllable costs and a sound financial structure.

As executive producers, Red Rock Entertainment can arrange for investors to visit the sets during filming, appear as extras, and attend private screenings. Red Rock Entertainment also arrange film investment seminars at Elstree Studios with guest speakers from the different film companies, along with qualified accountants to discuss the various tax advantages of investing in the film industry.



Production Company | Visual Effects

GSP Studios International



GSP Studios International Limited (GSP International) is a subsidiary of Green Screen Productions Limited and a member of the 'GSP Studios' Group of companies. GSP International acts as the dedicated international sales department for all films produced under the GSP Studios banner.

GSP International facilitates the sale of the catalogue of original and ground-breaking films made by GSP Studios. GSP Studios are dedicated to creating carefully designed, creative films to appeal to an international and domestic marketplace. Content is licensed to a wide variety of clients, including theatrical & DVD distributors, broadcasters, Video on Demand channels and in-flight entertainment buyers worldwide.



Senior Sales Executive Simon Barnes (pictured left), who has over 25 years experience in the industry, will manage sales on behalf of GSP International.

Simon enjoys excellent long established relationships with leading international distributors and film festivals around the world.

The GSP International catalogue of films will be represented at all major motion picture markets worldwide, including Cannes (Marche du Film), American Film Market (AFM), and the European Film Market (EFM).



Visual Effects

GSP Studios – Production Company & VFX

GSP Studios is a studio base in North Yorkshire, that specialises in providing production services and facilities to feature films. Its location also gives productions access to Screen Yorkshire funding.

The studio offers 3 large stage spaces, including an infinity curve green screen.

The company has close relationships with suppliers and crews in the area, guaranteeing competitive rates. It also boasts its own accommodation to limit production expenditure during filming.

VFX work will be provided by GSP VFX (GSP Studios' inhouse VFX Team). GSP VFX have a track record in providing creative and technical visual effects wizardry for the broadcast, film and commercial media.

The team offer full support to all stages of production, from pre-visualisation, conceptual artwork, shoot supervision, 3D and 2D through to providing delivery services of the final finished project.

GSP VFX formed in 2012 to create the highly conceptual stylised project *The Knife That Killed Me*, which is being released by Universal Pictures UK on 27th April.

Since then the team has provided VFX Services to *Sparks & Embers*, a romantic drama starring Kris Marshall; *Residue*, a three part apocalyptic thriller from Misfits Director Alex Garcia starring Iwan Rheon and Natalia Tena; *Slapper & Me*, a heart-warming coming of age story set in the 70's starring Luke Newberry, Genevieve Gaunt, Iain Glen and Ian Hart.

They have also worked on architectural conceptual projects as well as previsualisation and test shoots for several projects in development.

They are also currently working on the second specialised CGI feature from the Directors of *The Knife That Killed Me*.



Investment Schemes

Enterprise Investment Scheme Income Tax Relief



We are often asked to explain the EIS tax reliefs. They are definitely generous and can make any investment more attractive, or at least, help to protect from downside risk.

Before explaining the tax reliefs in more detail, a word of caution - you need to make sure you don't focus all your energy on understanding the EIS tax rules and remember to do your due diligence on the underlying investment i.e. its management, the business model, the market opportunities, the competition etc.

There are FOUR EIS primary tax reliefs as follows:

1. Income Tax Relief (30% upfront income tax relief).
2. Capital Gains Tax deferral Relief.
3. EIS Loss Relief against Income or Capital Gains
(loss set against income to reduce tax).
4. IHT Relief and Business Property Relief
(100% IHT relief after two years).

Income Tax Relief

In order to qualify for Income Tax Relief, an investor must hold a qualifying investment for a minimum period of three years from the date of issue, or when trade commences if later. In order to claim Income Tax Relief, the investor must not be deemed connected with the issuing company. A definition of a connected investor is contained below in Note A on page 4.

A qualifying investor will attract UK Income Tax Relief at 30% of the investment, subject to having sufficient taxable income.

An Income Tax Saving Example

Mr. Brown has income in the tax year as a result of which he would owe £3,000 income tax to HMRC.

If Mr. Brown were to invest £10,000 into a qualifying EIS company in the same tax year (or the next tax year), his income tax liability to HMRC would be reduced to zero. His investment into the EIS company would therefore have effectively cost him £7,000 for an investment in shares worth £10,000.



DAVID O'HARA

ISABELLE ALLEN

IN EXTREMIS



Red Rock Entertainment Ltd,
Suite 12 Elstree Studios | Shenley Rd. | Borehamwood | Hertfordshire
WD6 1JG | United Kingdom

Tel: +44 (0)203 745 5380
info@redrockentertainment.com | www.redrockentertainment.com